



TOYOTA HILUX N80 & N90 2015 ON WELDED STEEL ROCK SLIDERS

IMPORTANT! – READ BEFORE INSTALLATION

- This product must be installed exactly as per these instructions using only hardware supplied.
- Take a few moments to read instructions thoroughly before beginning work.
- In the event of damage to any bar component please contact OFFROAD ANIMAL to arrange repair/replacement of components.
- Do not use this product for any vehicle make or model other than that specified on these instructions.
- Do not remove labels from this product.
- This product and its fixings must not be modified in any way unless stated in these fitting instructions.
- The installation of this product is recommended for trained personnel.
- These instructions are correct at time of publication. OFFROAD ANIMAL cannot be held responsible for the impact of any changes subsequently made by the vehicle manufacturer. If you find something has changed please contact us to let us know!
- During installation it is the duty of the installer to check correct operation/clearances of all components.
- If Instructions are to be printed for reference in the workshop, it is recommended that they are printed in colour, for best legibility.
- Fitting time estimated 1-2 hours

GENERAL CARE AND MAINTENANCE

Use caution when cleaning with pressure washers, as they may compromise the product coating's integrity. Exercise care to avoid surface damage.

Only wash the product with a PH neutral car wash to prevent paint damage and discolouration.

Do not use acidic or alkaline based cleaning products.

Plastic parts may be maintained with silicone spray.

It is important to perform regular checks (pre/during/post trip or on an annual basis) on the installed product. More frequent checks may be required in extreme use cases. Checks include:

- Visual inspection for damage (eg. cracks, chips, dents etc.)
- Electrical wiring is not rubbing anything or worn out
- Bolts are torqued to correct specification (see torque guide below)

For touching up small stone chips, Offroad Animal recommends the following paint products:

- Dupli-Color Trim & Bumper Paint Black (TB101)
- VHT Hood, Bumper & Trim Paint Black (SP27)

BOLT TORQUE SETTINGS

Use the following bolt torques on all general fasteners, unless otherwise specified.

GENERAL FASTENERS	
Size	Torque Nm
M5	5 Nm
M6	9 Nm
M8	22 Nm
M10	44 Nm
M12	77 Nm

Use the following bolt torques on all structural front bar mount and tow point fasteners, and rear towbar fasteners, unless otherwise specified.

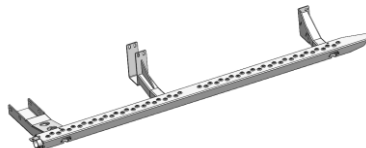

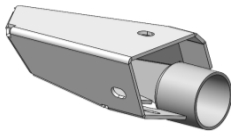
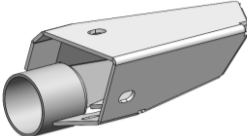
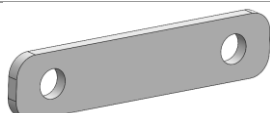
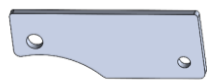

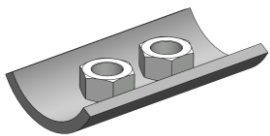

FRONT BAR MOUNTS AND TOW POINTS + REAR TOWBAR	
Size	Torque Nm
M10	57 Nm
M12	100 Nm
M14	164 Nm
M16	248 Nm

Always use a torque wrench to set correct torque settings. Ensure torque wrench is set to Nm unit of measurement. Otherwise perform conversion to lb-ft.

PARTS LISTING

IMPORTANT: Check all parts are present before beginning work! Contact OFFROAD ANIMAL if something is missing.

Main Parts – In the Box

Qty	Part Number	Description	Image
1	RSW-THL-N80-15-ASM1L	Hilux N80 Welded Slider Assy	
1	RSW-THL-N80-15-ASM1R	Hilux N80 Welded Slider Assy	
1	RSW-THL-N80-15-ASM2L	Endcap Assy - Hilux Welded Slider	
1	RSW-THL-N80-15-ASM2R	Endcap Assy - Hilux Welded Slider	
4	P-0107	Hilux Rear Mount Shim Plate 6MM	
2	P-0486	Hilux Rear Mount Shim Plate 6MM	
2	P-0487	Hilux Rear Mount Shim Plate 3MM	
2	NP-TUB-40NBH-2XM10-ASM0	40NB Heavy Double Nut Plate 2xM10, 25mm Spacing	
2	NP-COM-M12-40-ASM0	M12 NUT PLATE SHORT, 40MM STEM ROUNDED	

Small Parts – Contained in Small Parts Kit Bag

Qty	Part Number	Description
4	M12X130x1.25 GR10.9	Bolt Hex, M12X130x1.25, GR10.9 ZP
6	M12 FW HT	M12 FW High Tensile
4	M12x1.25P FLANGE NUT	Flange Nut, M12x1.25 G10.9 ZP
2	M12X40	Bolt Hex, M12X40X1.75, GR8.8 ZP
2	M8 X 40 HEX	Bolt Hex, M8X40X1.25, GR8.8 ZP
6	M8 X 20 BHCS BLACK ZINC	SCREW, BUTTON HEAD CAP, M8X20X1.25, ISO4042 ZnNi BLACK PASSIVATED FINISH
2	M8 HD FLAT WASHER	M8 FLAT WASHER - High Tensile 19x8x1.9mm
6	M8 HD FLAT WASHER - BZP	M8 FLAT WASHER - High Tensile 19x8x2mm, ISO4042 ZnNi BLACK PASSIVATED FINISH
4	M10 X 120	Bolt Hex, M10X120X1.5, GR8.8 ZP
4	M10 FW LHD	WASHER, FLAT M10X28.5X2.5
4	M10 FLANGE NUT	Flange Nut, M10x1.5 G8.8 ZP
4	M10 x 35 BLACK ZINC	Bolt Hex, M10X35x[1.5], GR8.8 ZP, ISO4042 ZnNi BLACK PASSIVATED FINISH
4	M10 Flat Washer Black Zinc	WASHER, FLAT M10X20.5X1.6, ISO4042 ZnNi BLACK PASSIVATED FINISH


TOOLS REQUIRED

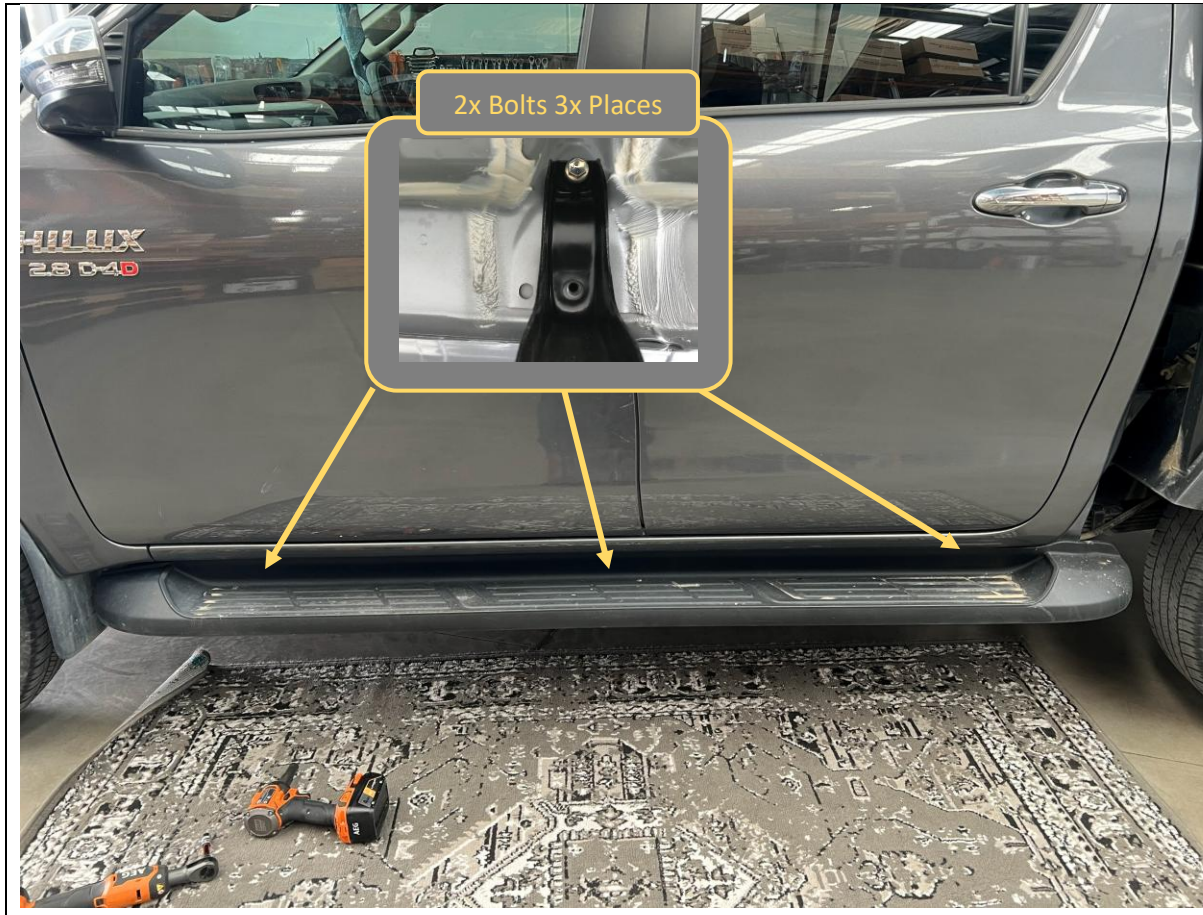
The following tools will be required to install the product.

Hand Tools	Power Tools	Workshop Equipment
Metric Socket Set 8-19mm Socket Extension Bar Metric Spanner Set 10-19mm Hex (Allen) Key Set 4-6mm Trim Tool Hammer Pin Punch	Electric/Air Impact Driver (Optional)	Hydraulic Floor Jack Lift Trolley

WORKSHOP SAFETY

It is the responsibility of the installer to always complete works in a safe manner. Make sure the following safety equipment is available and precautions are observed whilst fitting this product.

<p>Hearing Protection</p> 	<p>Always wear ear protection when using power tools.</p>
<p>Eye Protection</p> 	<p>Ensure eye protection is always worn when cutting or drilling.</p>
<p>Manual Handling</p> 	<p>Do not attempt to lift bar assemblies or rock sliders on your own.</p> <p>Always use two people to lift or use mechanical Lifting aid such as hydraulic lifting trolley.</p>
<p>Vehicle Support</p> 	<p>Always ensure vehicle is properly supported when working on it. Do not attempt to fit products whilst suspension work is being carried out. Do not work under a vehicle supported only by a jack.</p>



<ol style="list-style-type: none"> 1. These Rock sliders suit both N80 (2015-2025) and N90 (2026+) Vehicles. Fitment is shown on an N80 vehicle. Steps are generally the same, with specific differences noted in specific steps. 2. Remove Factory side steps if fitted by removing the 6x Bolts (2 Per mount) securing them to the body using a 12mm socket. 	<p>TOOLS REQUIRED</p> <p>12mm socket</p>
<ol style="list-style-type: none"> 3. Discard Factory steps and bolts. 	<p>FASTENERS</p> <p>6x Factory Flange head Bolts (per side)</p>



4. Unpack welded slider assembly and position on lifting trolley such that mounts sit approximately level.

5. Gather and sort required hardware for fitment.

Front Mount:

- 2x M12x130x1.25P Hex Bolts
- 2x M12 High Tensile Washer
- 2x M12x1.25p Flange Nuts
- 2x P-0107 5mm Spacer Plate

Mid Mount:

- 2xM10x120 Hex Bolt
- 2xM10 Flat Washer
- 2xM10 Flange Nut

Rear Mount:

- 1x M8x40 Hex Bolt
- 1x M8 High Tensile Washer
- 1x NP-COM-M12-40-ASM0 M12 Lollipop Nut Plate
- 1xM12x40 Hex Bolt
- 1x M12 High Tensile Washer
- 1x P-0486 6mm Spacer Plate
- 1x P-0487 3mm Spacer Plate

TOOLS REQUIRED

Lifting Trolley

FASTENERS

Refer main text



6. Using a hydraulic jack, support the gearbox cross member. Place enough pressure on the cross member that the body of vehicle lifts just slightly.

Ensure the jack is positioned such that it will not impede access for the slider fitment, we recommend jacking from opposite side as shown. Leave jack in position during fitment of sliders.

7. Remove and discard the Factory M12 Bolts securing the gearbox cross member.

TOOLS REQUIRED

Jack
18mm socket / Spanner

FASTENERS

Factory Bolts - Discard

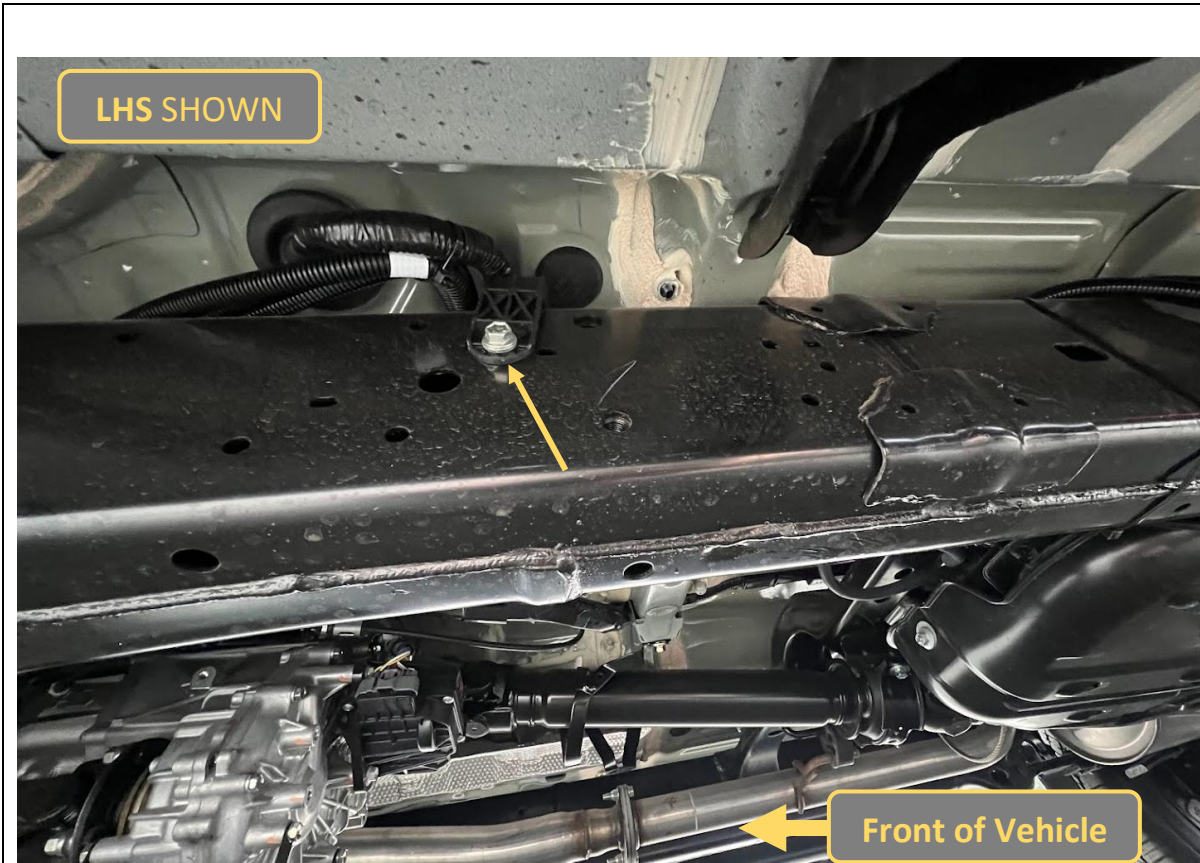


8. **N80 ONLY** Remove the M8 Bolt securing the hand brake cable retaining bracket using 12mm socket / spanner. This threaded insert in chassis will be used for the rear mount.
9. Discard bolt and let bracket hang loose for the moment.
10. **N90 ONLY** – Identify M8 Threaded point in chassis in this location for rear mounting point of slider

TOOLS REQUIRED

12mm Socket / Spanner

FASTENERS



11. If fitted to your vehicle, remove the M8 Bolt securing the wiring harness in the center of the LH chassis rail, to make maneuvering chassis mount around harness easier.
12. Retain bolt for refitment and let bracket hang loose.

TOOLS REQUIRED

12mm Socket / Spanner

FASTENERS

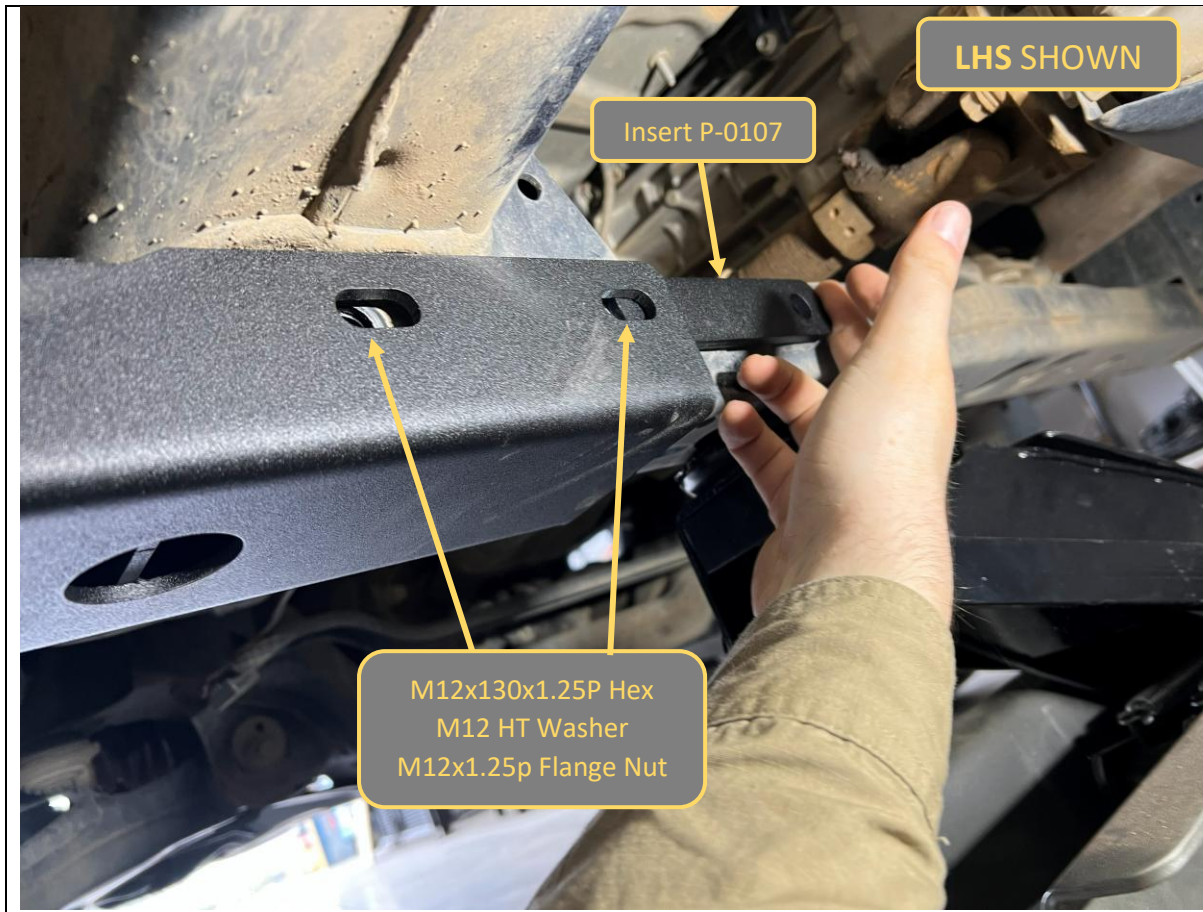


13. With assistance from another person, fit the slider to the vehicle and secure it to mounting locations. Details of each mount location are shown in the following steps, but do not need to be done in the order shown.
14. We find the best way to fit is to have one person underneath the car manipulate the mounts and fasteners into position and a second person to assist support and position the slider assembly. It is necessary to move the slider inwards first, tilting to get under the vehicle sill & chassis, and then up to the final position.
15. The mid mount is a U section that cradles the chassis rail. Take care to ensure it slides up directly against the chassis rail and does not pinch or trap any electrical harnesses or fluid lines. Release clips securing lines to chassis with trim tool if required.

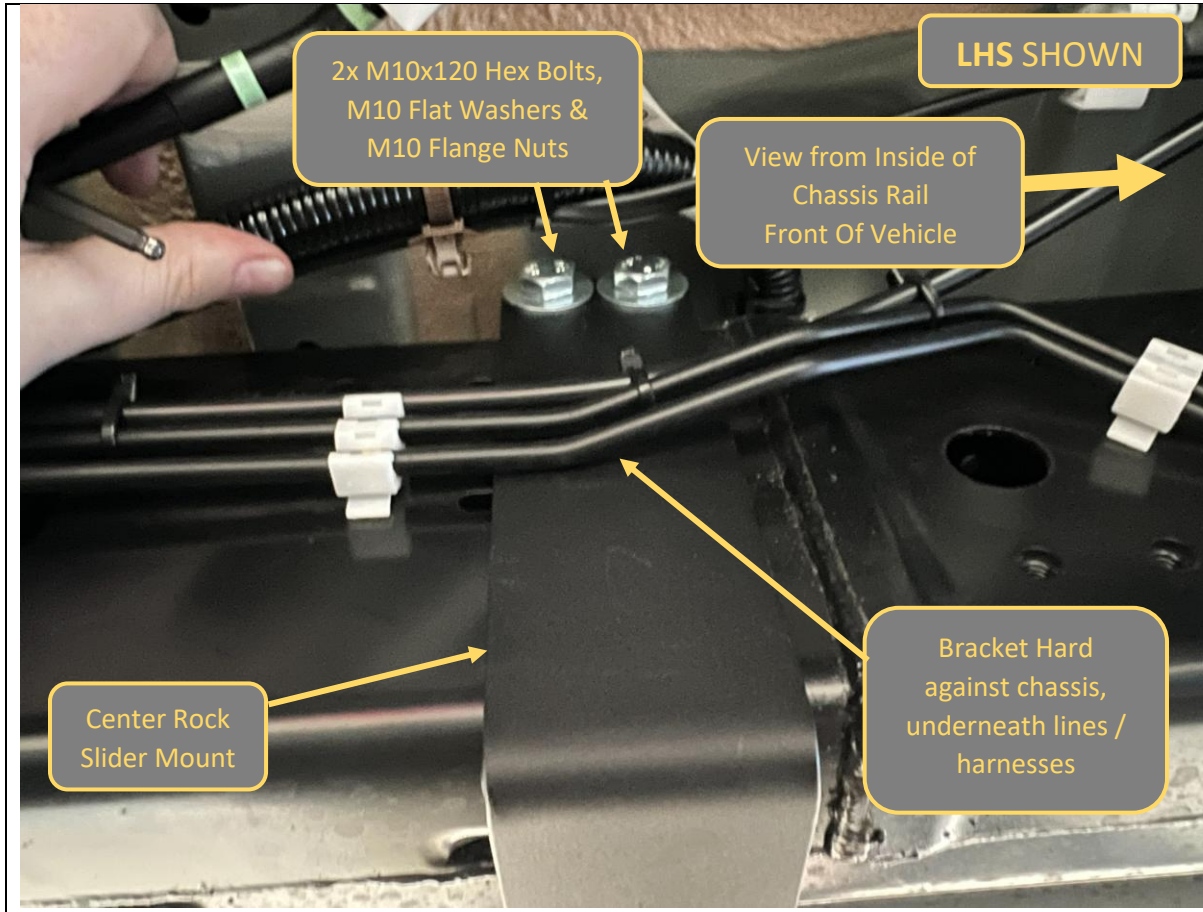
TOOLS REQUIRED

- Lift Trolley
- Patience
- Finger Dexterity
- Trim tool

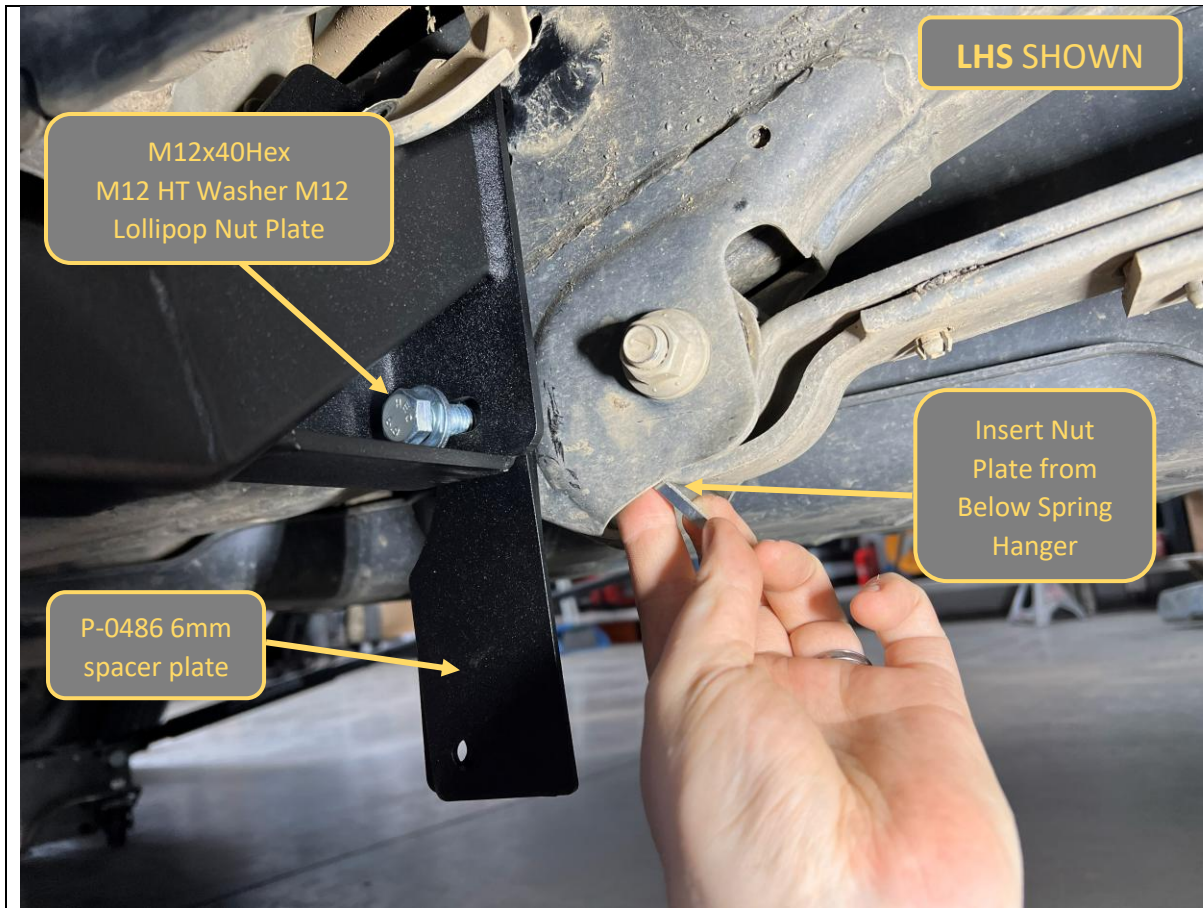
FASTENERS



<p>16. Install the Front mount over the gearbox crossmember.</p> <p>17. Insert P-0107 5mm Spacer Plates between the crossmember and the mounting bracket (front and back) and align with holes.</p> <p>18. Secure with 2x M12x130x1.25P Hex Bolts, 2x M12 High Tensile Washer and 2x M12x1.25p Flange Nuts.</p> <p>19. Leave bolts finger tight at this stage.</p>	<p>TOOLS REQUIRED</p>
	<p>FASTENERS</p> <p>2x M12x1.25 Flange Nut 2x M12x130x1.25 Bolt 2x M12 HT washer 2x P-0107 5mm Spacer Plates</p>



<p>20. The mid mount of the chassis will be guided over the chassis rail during the initial fitment process.</p> <p>21. Secure with 2x M10x120 Hex Bolts, M10 Flat Washers & M10 Flange Nuts over the top of the chassis rail.</p> <p>22. Ensure fasteners and mounts are not trapping or pinching any electrical or hydraulic lines on the chassis rail.</p>	<p>TOOLS REQUIRED</p>
<p>23. Leave bolts finger tight at this stage</p>	<p>FASTENERS</p> <p>2x M10x120 Hex Bolts, 2x M10 Flat Washers 2x M10 Flange Nuts</p>



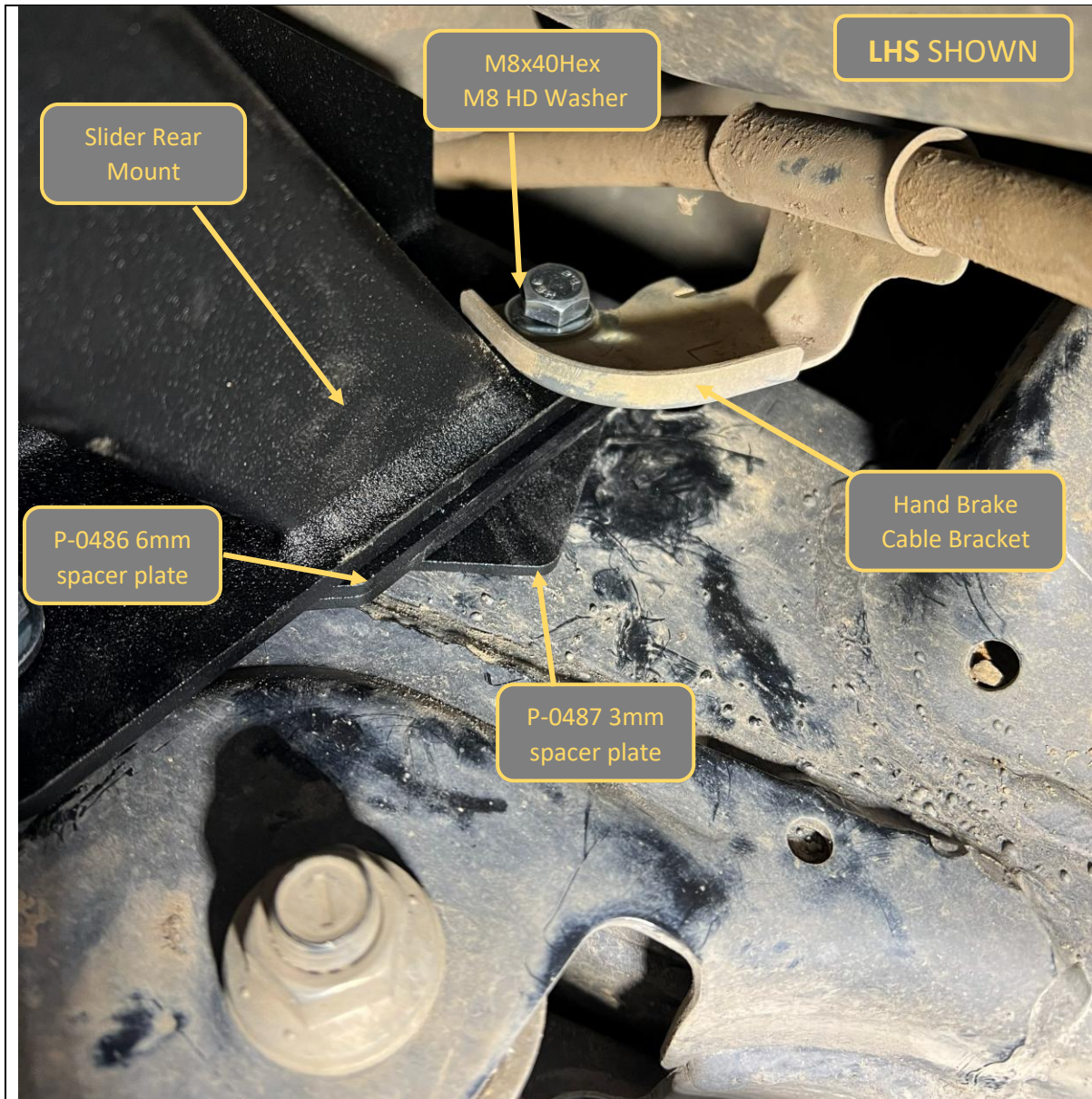
24. Fit the rear mount to the chassis adjacent to the forward leaf spring hanger.
25. Start by fitting the bottom M12x40 bolt. Fit P-0486 6mm spacer plate between mount and chassis and secure into M12 lollipop nut plate positioned from underside of spring hanger as shown.
26. Leave bolt finger tight at this stage

TOOLS REQUIRED

12mm Spanner / Socket
13mm Spanner / Socket

FASTENERS

1x M12x40 Hex Bolt
M12 HT washer
M12 Lollipop Nut Plate



27. Flip up the P-0486 6mm spacer plate to align with the M8 mounting hole on the top of the rear mount.

28. Secure the top of the rear mount to the chassis with M8x40 Hex bolt and HD M8 washer with components in the following order (outside to inside).

- M8x40 Hex Bolt
- M8 HD Flat Washer
- Hand Brake Cable Bracket (if present)
- Rock Slider Mount
- P-0486 6mm spacer
- P-0487 2mm spacer
- M8 Captive Nut in Chassis

29. Leave bolts finger tight at this stage

TOOLS REQUIRED

FASTENERS

- 1x M8x40 Hex Bolt
- 1x M8 HD washer
- 1x P-0487 2mm spacer



- 30. With assistance, align the slider so that it is approximately parallel with the sill of the vehicle.
- 31. Lock slider in position by tightening the mounting bolts.

Tighten in following order.

- Front Mount Crossmember M12 Bolts. Torque to **134NM**
- Rear Mount M12 & M8 Bolt.
- Mid Mount M10 Bolts. Tighten until top edges of bracket on both sides is hard against the chassis. Do not overtighten.

TOOLS REQUIRED

- 13mm Socket / Spanner
- 16/17mm Socket / Spanner
- 18/19mm Socket / Spanner

FASTENERS



- 32. Release and remove jack supporting front crossmember.
- 33. Check that the tail of the nut plate near the rear spring mount has not moved during tightening and will not touch the spring. Bend tail using hammer and punch to create clearance if necessary.
- 34. Re-fit the bolt securing the Wiring harness to the chassis rail using OE Bolt.
- 35. Complete slider installation steps 3-27 for the other side of the vehicle.

TOOLS REQUIRED

Hammer
Punch
12mm socket / spanner

FASTENERS

OE Bolt



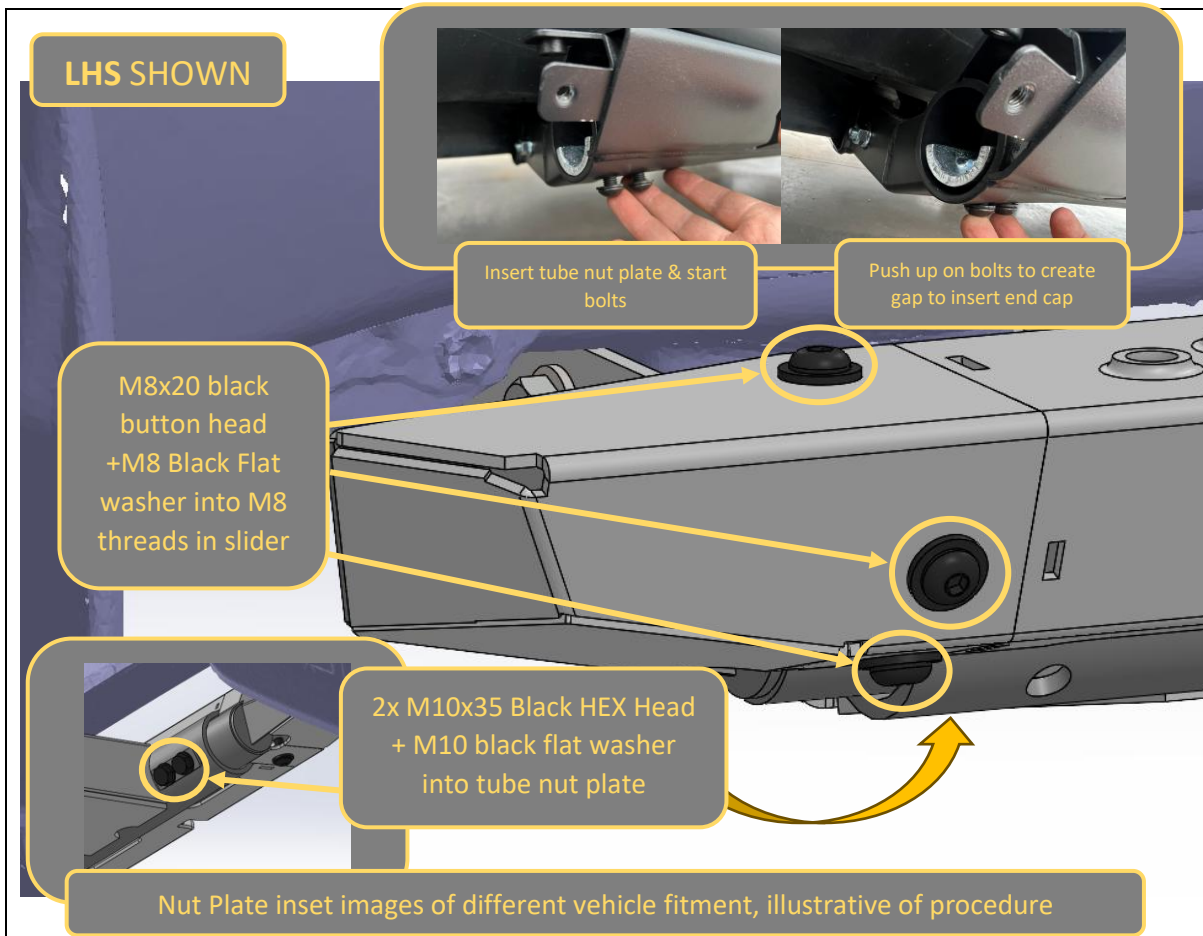
36. If you are also fitting side rails to cars equipped with a Toro bull bar do so now, follow instructions supplied with the side rail kit.

TOOLS REQUIRED

Refer to Side Rail Kit instructions

FASTENERS

Refer to Side Rail Kit instructions



<p>37. If you are not fitting side rails, fit the end caps to the front of the sliders.</p> <p>38. First insert the tube nut plate into the slider tube and thread in 2x M10x35 Black Zinc Bolts with M10 black washers.</p> <p>39. Push up on the bolts to lift the nut plate and create a gap to allow the end cap to be fitted on the end of the slider. The tube portion of the end cap should sit between the slider tube and the tube nut plate.</p> <p>40. Secure the end cap with 3x M8x20 Black Button head bolts & Black flat washers into M8 threads in the slider. One bolt is on top of the end cap and not visible in the image.</p> <p>41. Tighten the M8 bolts first, then the M10 Bolts.</p> <p>42. Complete end cap installation on other side of the vehicle.</p> <p>43. Double check all fasteners are tight, and you are done!</p>	<p>TOOLS REQUIRED</p> <p>5mm Hex Key 16mm Spanner / Socket.</p> <hr/> <p>FASTENERS</p> <p>3x M8x20 Black Button Head 3x Black M8 Washer 2x M10x35 Black Hex Bolt 2x Black M10 Washer</p> <p>Per Side</p>
-------------------------------------------------------------------------------------------------------------------------------------------------------------------------------------------------------------------------------------------------------------------------------------------------------------------------------------------------------------------------------------------------------------------------------------------------------------------------------------------------------------------------------------------------------------------------------------------------------------------------------------------------------------------------------------------------------------------------------------------------------------------------------------------------------------------------------------------------------------	----------------------------------------------------------------------------------------------------------------------------------------------------------------------------------------------------------------------------------------



Congratulations!
Head for the tracks and enjoy your newly protected Hilux!